

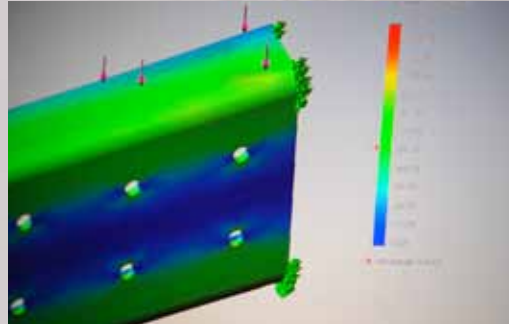
 rosenbauer

COMMANDER




DESIGN SAFETY

WORLD CLASS DESIGN



■ State-of-the-Art

- Finite Element Analysis
- State-of-the-Art Computer 3-D Engineering

■ Durable Construction

- Heavy Duty 3/16 Aluminum Plate
- Heavy Duty Aluminum Extrusion Framing
- Stamped Corners and Front Fascia



- Full length or barrier style doors

TESTING

WORLD CLASS TESTING



■ Frontal Impact Test



■ Airbag Deployment Testing



■ HVAC Test



■ Side Impact Test



■ 120,000 lb. Crush Test



■ 100,000 Mile Track Test



■ Single Bonded Windshield

■ In-Dash

■ Multiplexing

■ Customiza

■ Automotive Style
Wrap Around Dash

■ Wide Hip Room



■ Great Forward Visibility

HVAC Vents

able Center Console

■ Wide Hip Room

ROSENBAUER

WORLD CLASS INNOVATION



■ Controls located in steering wheel



■ Dual outboard HVAC for crew



■ Easy service battery access location



■ Multiplex electrical standard
■ Hard-wired Optional



■ Wide door openings and low steps



■ Wrap around dash, conveniently located controls and in dash HVAC vents

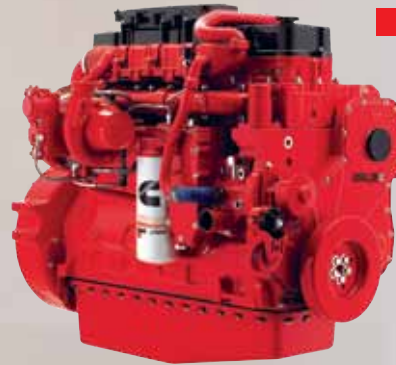
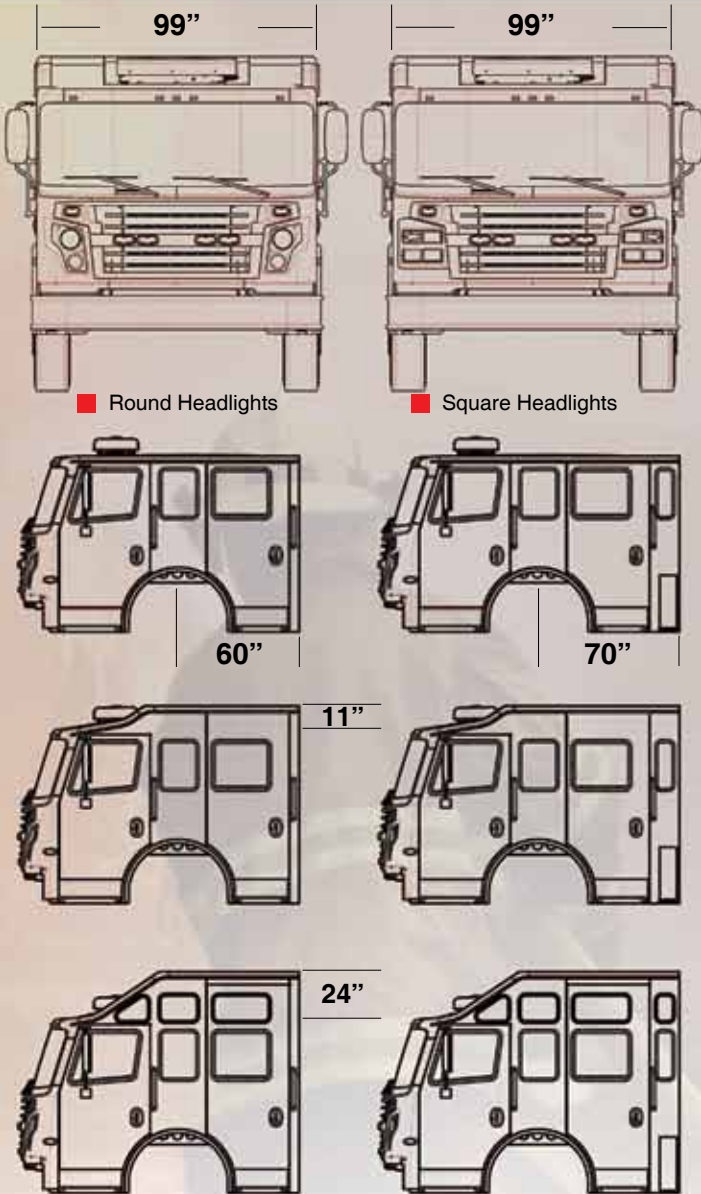


■ Powder coated frame, crossmembers and brackets

■ Single, double or triple frame rails

ROSENBAUER

WORLD CLASS INNOVATION



Cummins Powered
ISC, ISL or ISX

ENGINES

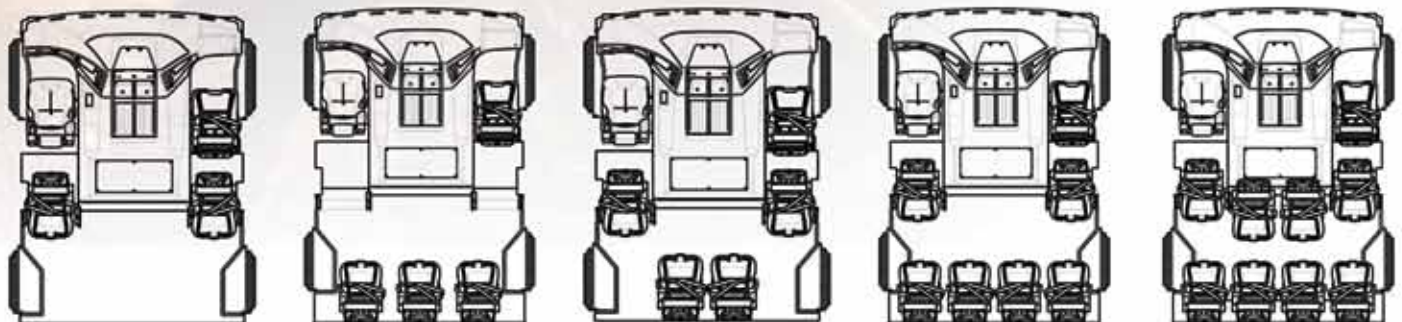
TYPE	RATINGS
Cummins ISC	260-380 hp / 660-1,050 ft-lbs torque
Cummins ISL	345-450 hp / 1150-1250 ft-lbs torque
Cummins ISX 12	370-500 hp / 1450-1645 ft-lbs torque

TRANSMISSIONS

Allison	3000 EVS
	4000 EVS

AXLES

TYPE	CAPACITY (LBS)
Steer	18k, 20k, 22.8k
Drive	24k, 27k, 31.5k, 32.5k
Tandem	40k, 44k, 48k, 52k, 54k, 60k,



Seating for up to 10



info@rosenbaueramerica.com

ROSENBAUER SOUTH DAKOTA, LLC.
100 THIRD STREET
LYONS, SOUTH DAKOTA 57041
P: 605.543.5591

ROSENBAUER MINNESOTA, LLC.
5181 260TH STREET
WYOMING, MINNESOTA 55092
P: 651.462.1000

ROSENBAUER MOTORS, LLC.
5190 260TH STREET
WYOMING, MINNESOTA 55092
P: 651.462.1000

ROSENBAUER AERIALS, LLC.
870 SOUTH BROAD STREET
FREMONT, NEBRASKA 68025
P: 402.721.7622