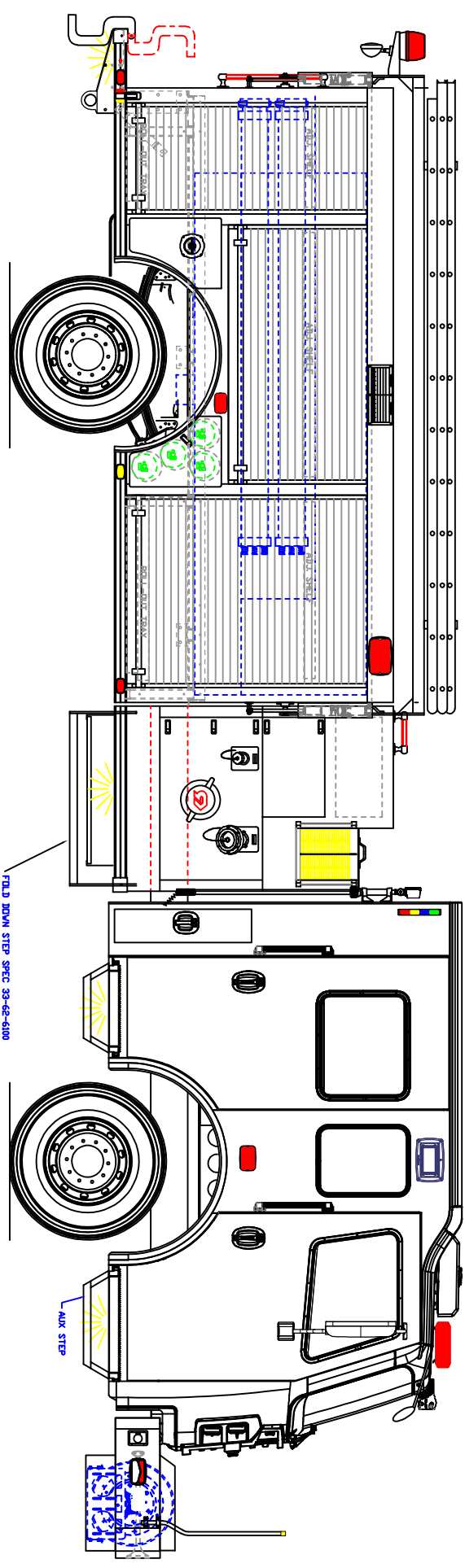
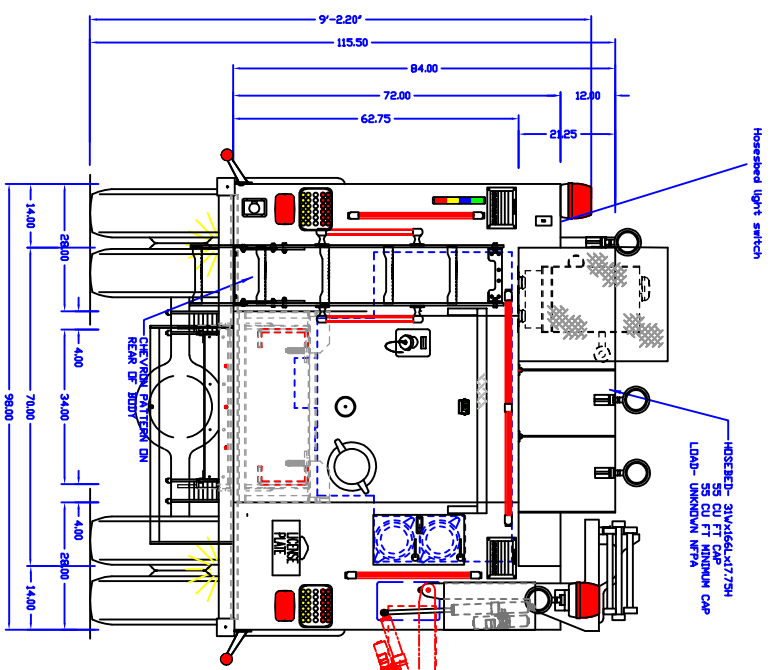
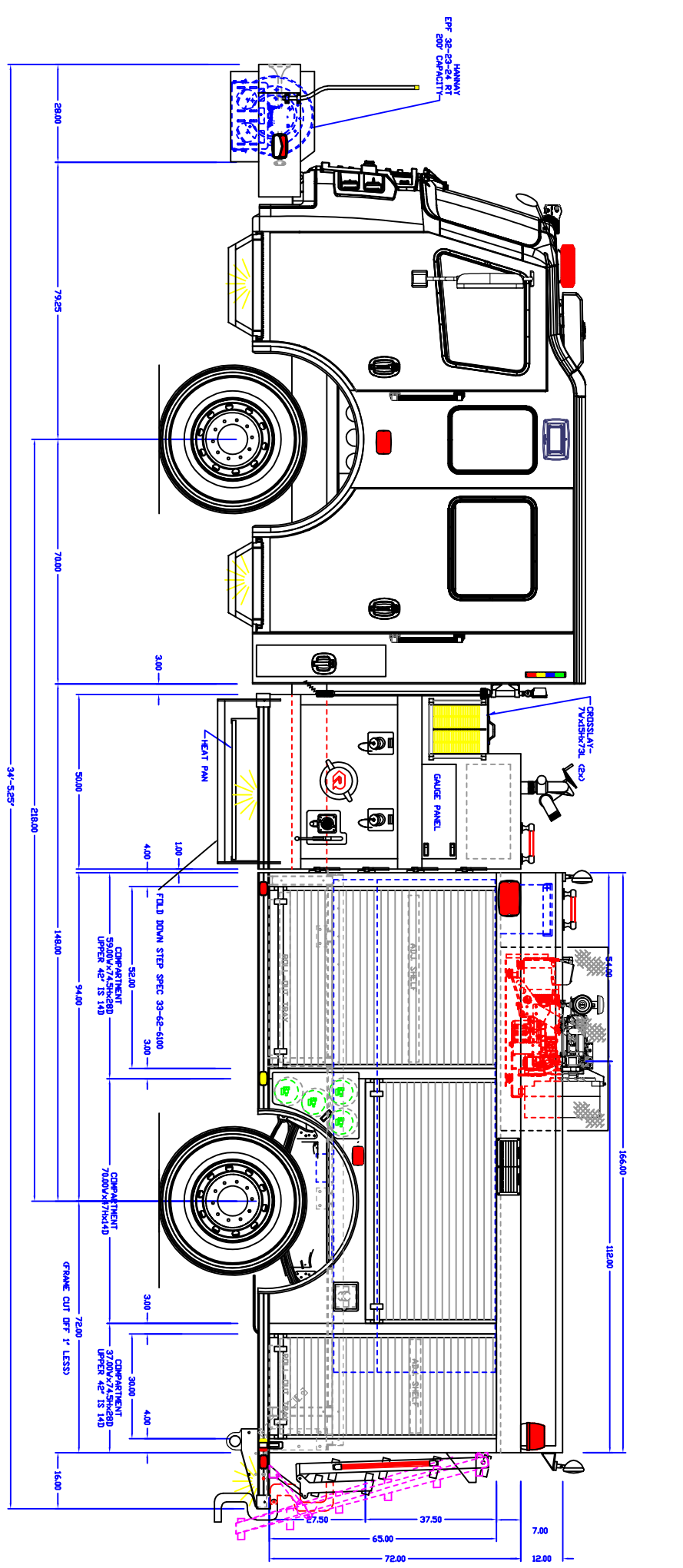




- NOTES:
1. OVERALL HEIGHT IS IN LOADED CONDITION. UNLOADED HEIGHTS MAY BE 4" ABOVE HEIGHTS SHOWN.
 2. DO NOT SCALE DRAWING.
 3. ALL DIMENSIONS ARE APPROXIMATE AND SUBJECT TO ENGINEERING CHANGES.
 4. DRAWING MAY OR MAY NOT SHOW ALL ITEMS AS DESCRIBED IN THE WRITTEN DETAIL SPECIFICATIONS.
 5. INCLUSION OF AN ITEM ON THE DRAWING DOES NOT CONSTITUTE INCLUSION OF THAT ITEM WITH THE FINAL DELIVERED UNIT.
 6. THE EFFECTIVE DOOR OPENINGS WILL BE APPROX. 2" LESS THAN THE NOTED COMPARTMENT OPENING FOR ROLL UP DOORS AND UP TO APPROX. 4" LESS FOR HINGED DOORS



REVISED -	DATE -
DRAWN: BVZ	DATE: 7/13/20

PROPRIETARY AND CONFIDENTIAL
THE INFORMATION CONTAINED IN THIS DRAWING IS THE SOLE PROPERTY OF ROSENBAUER. ANY REPRODUCTION IN PART OR AS A WHOLE WITHOUT THE WRITTEN PERMISSION OF ROSENBAUER IS PROHIBITED.

COMPANION: YELLOW THERMOPLASTIC	BODY WIDTH	98"
MAXIMUM HEIGHT		NONE
MAXIMUM LENGTH		NONE

APPROVED BY:

CHASSIS: RA 3000 4x4
 PUMP: ROSENBAUER 1250 ICPM (1500 GPM)
 TANK: POLY IMP/1100/16.65FOAM US(1321) / (20)
 PANEL MATL: LINE X

ROSENBAUER CT 3/16"

CREE NATION GOVERNMENT #4, QC

